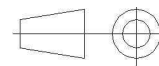
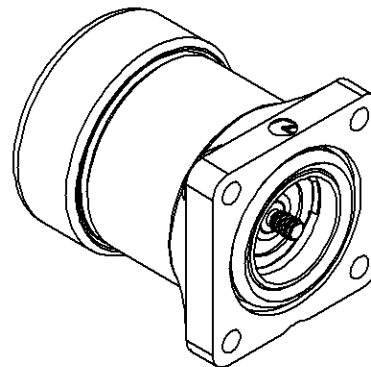
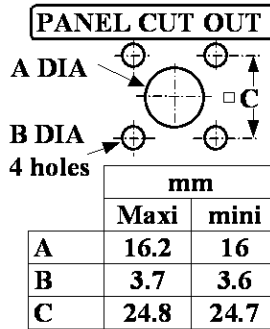
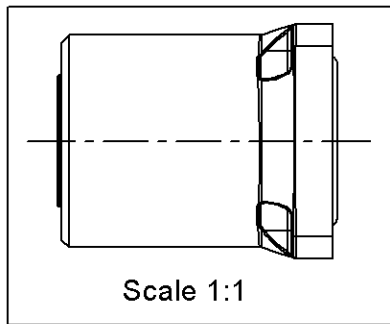
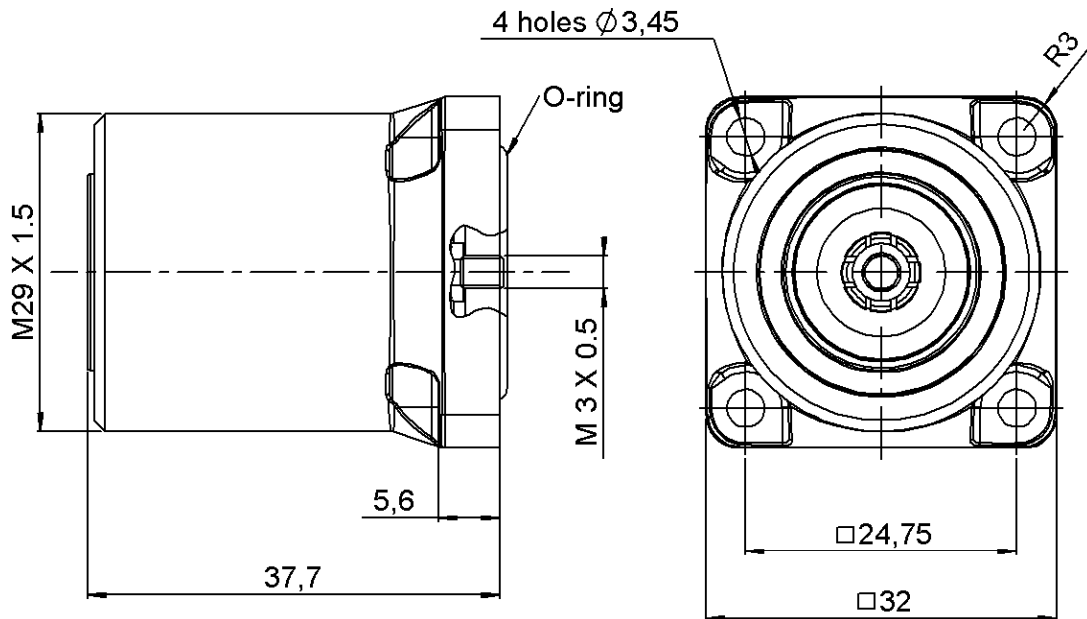


COMPOSITE SQUARE FLANGE JACK RECEPTACLE

R187.413.000

PANEL SEAL - FRONT MOUNTING M3 SCREW

S : 7/16 COMPOSITE



All dimensions are in mm.

COMPONENTS	MATERIALS	PLATING (µm)
BODY	COMPOSITE MATERIAL - BLACK	-
CENTER CONTACT	BRONZE	SILVER 5 OVER COPPER 0.5
OUTER CONTACT	BRASS	BBR 0.5 OVER SILVER 8
INSULATOR	PTFE	-
GASKET	SILICONE RUBBER	-
OTHERS PARTS	-	-
-	-	-
-	-	-

Issue : 0834 B

In the effort to improve our products, we reserve the right to make changes judged to be necessary.



COMPOSITE SQUARE FLANGE JACK RECEPTACLE

R187.413.000

PANEL SEAL - FRONT MOUNTING M3 SCREW

S : 7/16 COMPOSITE

PACKAGING

SPECIFICATION

Standard	Unit	Other
10	'W' option	Contact us

ELECTRICAL CHARACTERISTICS

ENVIRONMENTAL

Impedance	50	Ω
Frequency	0-7.5	GHz
VSWR	*1.06 + 0,0000	x F(GHz) Maxi
Insertion loss	0.05	\sqrt{F} (GHz) dB Maxi
RF leakage	- (NA	- F(GHz)) dB Maxi
Voltage rating	1400	Veff Maxi
Dielectric withstanding voltage	2700	Veff mini
Insulation resistance	10000	M Ω mini

Operating temperature	-40/+85	$^{\circ}$ C
Hermetic seal		Atm.cm3/s
Panel leakage	IP67	

OTHER CHARACTERISTICS

Assembly instruction

Others :

*VSWR : 1.06 between DC to 3 GHz

*VSWR : 1.1 between 3 to 7 GHz

PIM3:-125dBm under 2 carriers of +43dBm

Flammability rating : UL94-V0

UV resistance : IEC 68-2-5 (1000h@1250W/m²)

MECHANICAL CHARACTERISTICS

Center contact retention		
Axial force – Mating end	200	N mini
Axial force – Opposite end	NA	N mini
Torque	NA	N.cm mini

Recommended torque		
Mating		N.cm
Panel nut		N.cm

Mating life	500	Cycles mini
Weight	45,1200	g

Issue : 0834 B

In the effort to improve our products, we reserve the right to make changes judged to be necessary.

